



MINIBAR & REFRIGERATION TECHNOLOGY



Experience the cool of silence

www.ismminibar.com

MiniMax Solutions

SERIE ECO

STANDARD FEATURES

- 1,5 Lt Bottle Holder (40 Lt)
- The use of C-pentan (100% environment-friendly)
- Absorption cooling system
- Mechanic thermostat
- White plastic shelves
- Flat door

OPTIONAL FEATURES

- Reversible door
- Energy supply (110V/60Hz - 12/230V - 12/110V - 24/230V)
- Sliding hinge
- Light
- Lock
- Wheels
- Built in
- Freestanding

MODEL	SM 40 ECO
Gross Volume	38 Lt
Net Volume	34 Lt
External Dimensions (HxWxD) mm	566 mm x 441 mm x 457 mm
Packed Dimensions (HxWxD) mm	614 mm x 464 mm x 494 mm
Compartment Type	Cellar
Energy Consumption (kWh / Annum)	278
Energy Class	E
Energy Efficiency Index	111
Climate Class	N (16°C - 32°C)
Gross Weight	15,4 kg
Net Weight	14 kg
Power	60-75 Watt
Power Supply	230 V / 50-60 Hz
Container Loading Capacity (20°/40°/40°HC)	165 - 360 - 480

This product is compatible to EU directives: 643 / 2009 and 1060 / 2010. Products are tested according to EN ISO 15502 standards.

COLOR RANGE



Black



White



Dark Brown



Sliding hinge fixture for built-in models



Lock (Optional)



Wheels (Optional)

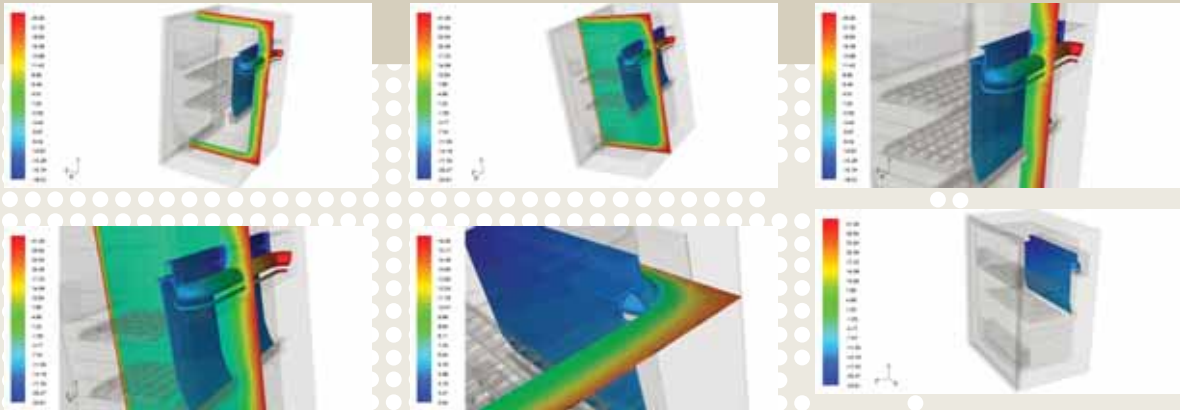


Interior light (Optional)



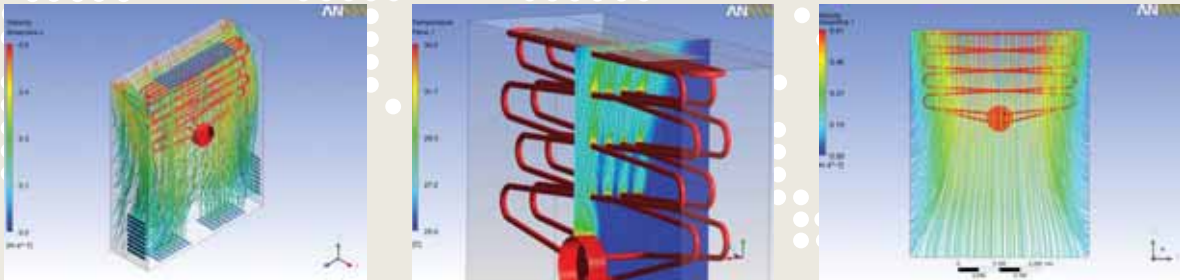
→ SM 40 ECO

PERFORMANCE



The ease of use and breadth of modeling capabilities available within ANSYS CFD software have allowed us to understand new design products better and quickly evaluate many different components at a design's conceptual stage while providing the accuracy necessary to optimize the chosen design.

Through the timely application of CFD we are able to reduce the number of prototypes tested and the time to get our products to market. With the help of Ansys CFD, our customers are going to spend less money on energy with our new designs.



The use of best qualified Peltier modules have allowed us to create a minibar with Peltier Technology working for 200,000 hours and a better performance not affected by thermal stress due to thermal barriers put on Peltier Modules.

PROPER INSTALLATION

These instructions are appropriate for installation of built in minibars into a furniture.

